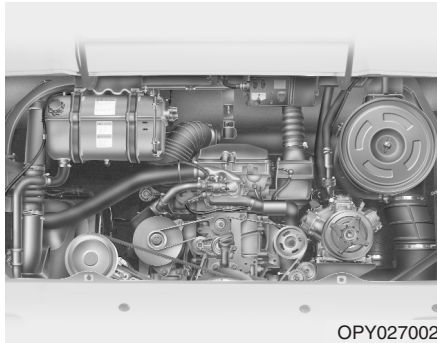


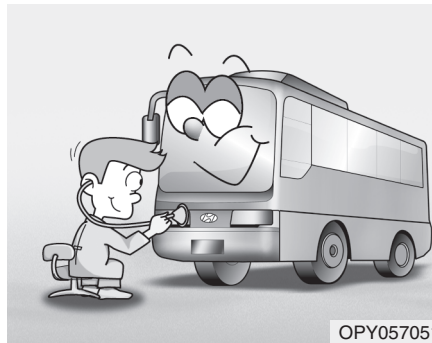
| | |
|--|---|
| | <div data-bbox="1285 384 1825 858"> <p>Explanation of scheduled maintenance items / 7-2</p> <p>Precautions for cold season / 7-3</p> <p>Operation on snow or ice covered roads / 7-4</p> <p>Precaution for hot season / 7-5</p> <p>Vehicle installed air-conditioner / 7-5</p> <p>Before starting the engine check-up of engine oil / 7-6</p> <p>Check-up of cooling water / 7-6</p> <p>Removing water from air tank / 7-7</p> <p>Check-up steering oil / 7-7</p> <p>Check-up-windshield washer fluid level / 7-7</p> <p>Replacing fuses / 7-8</p> <p>Replacement of lamp / 7-9</p> <p>Tire rotation / 7-11</p> <p>Tire type / 7-11</p> <p>Chassis number / 7-11</p> <p>Engine number / 7-12</p> </div> <div data-bbox="1061 879 1924 940"> <div data-bbox="1061 879 1821 940">Consumer information</div> <div data-bbox="1821 879 1924 940">7</div> </div> <div data-bbox="1285 975 1724 1034"> <p>Vehicle identification number (VIN) / 7-12</p> <p>Vehicle information code palate / 7-12</p> </div> |
|--|---|

EXPLANATION OF SCHEDULED MAINTENANCE ITEMS



Engine and power train are mounted in line at the rear for ease of access and general maintenance. All routine servicing points are readily accessible.

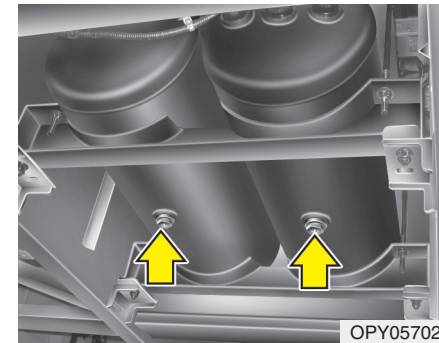
Access to the powerful Hyundai engines for maintenance is excellent, even from inside the vehicle.



Inspection after operation

After operation, clean the vehicle and perform the following checks:

- If anything wrong is noted during operation, check and repair. If it is hard to repair, do not leave it alone but call your nearest service shop.
- Check all the parts for looseness, damage, oil and water leaks.



In very cold weather, take the following steps.

Remove all coolant unless it contains antifreeze. If the coolant is frozen, the crankcase might be cracked.

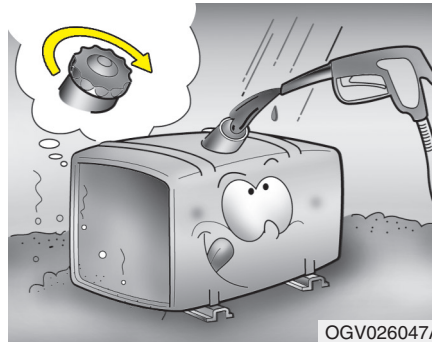
Open the drain cock of the air tank to remove the water collected in the tank, because otherwise the water frozen could cause failure of the brake system.

PRECAUTIONS FOR COLD SEASON



When the atmospheric temperature falls, special precautions must be taken.

- In a very cold district where the lowest atmospheric temperature falls below -25°C (-13°F), additional special precautions are required.



Precautions at refueling

- Use a fuel suitable for the atmospheric temperature. An improper fuel might make it impossible to start the engine.
- Try to fill up the tank with the fuel. If the fuel level in the tank is low, the moisture contained in the air might be condensed and might cause icing, rust formation and hard starting.
- Positively fasten the cap of the fuel tank to prevent the entry of snow or water.

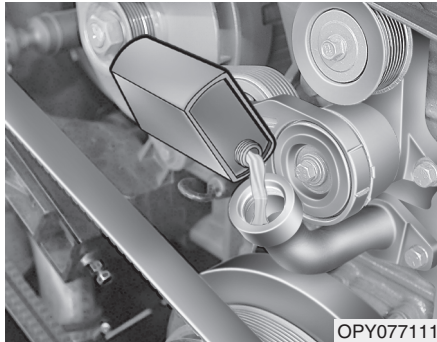
Antifreeze

Add antifreeze to the coolant to prevent freezing.

For use of antifreeze, refer to Section on "Replacement of coolant" on page 6-25.

CAUTION

When no antifreeze is used, remove all coolant after a day's operation to prevent damage by freezing of the coolant.



Oils

Use oils suitable for the atmospheric temperature. The viscosity of engine oil will increase and hard starting will result as the atmospheric temperature falls.

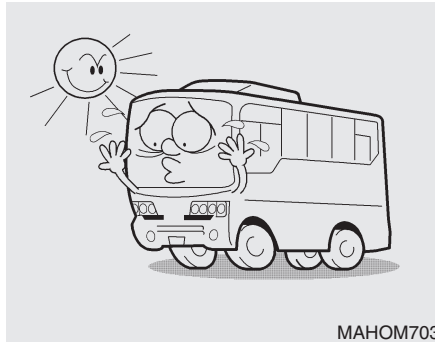
OPERATION ON SNOW OR ICE COVERED ROADS



The tire chains are useful in obtaining large drive force, but are not effective against slipping and skidding. When the tires have tire chains, operate your vehicle very carefully, as abrupt brake application readily causes slipping and skidding.

When there is a need for operation on a ice-covered road or in a muddy area, use tire chains or snow tires.

PRECAUTIONS FOR HOT SEASON



MAHOM703

Cooling system

Sediments of cooling water in cooling system such as furs and rusts will cause overheating of the engine. Clean up the cooling system as following procedure.

Cleaning procedure of cooling system

Use a cleaning agent to clean the cooling system.

To clean the cooling system raise the coolant temperature to 90°C or more and keep the engine.

- Open the radiator cap
- Remove the coolant completely opening the drain cock of radiator, engine crank case and oil cooler.
- Pour the soft water and cleaning agent to the filter cock.
- To circulate the cleaning solution throughout the coolant system, run the engine until the coolant temperature reaches about 90°C after closing radiator cover.
- Allow the engine to warm up for approx. 30 minutes.
- After stopping the engine, open the drain cock of the radiator, engine crankcase and oil cooler to remove the coolant thoroughly.
- After pouring the soft water, run the engine for a while.

To remove the cleaning solution thoroughly, repeat above procedure several times. If the coloured water runs out, there is still scale or rust in the system.

VEHICLE INSTALLED AIR-CONDITIONER

Bleed the system when replacing the coolant. Use a soft water and anti-corrosion liquid or the water mixed antifreeze liquid.

To prevent corrosion, you should use anticorrosion liquid in hot weather. Avoid using well water or river water, as it causes scale or rust.

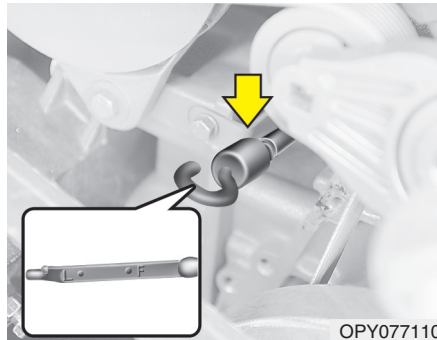
If the cooling system has scale and rust, the engine overheats and the air-con does not operate well. In hot weather, use only antirust as coolant.



CAUTION

Check if cooling water is sufficient, fan belt tension is proper and radiator cap is tightly fastened. To avoid the engine overheated on driving, always see if the overheat warning lamp is on or not.

BEFORE STARTING THE ENGINE CHECK-UP OF ENGINE OIL



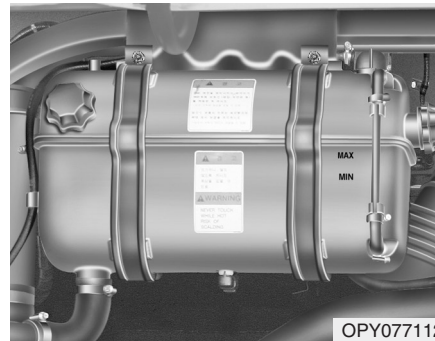
OPY077110

Before checking the oil, turn the engine off and be sure it is parked level ground. Wait 20-30 minutes, then remove the dipstick, wipe it off, fully reinsert the dipstick and pull it out again.

Then note the highest level the oil has reached on the dipstick.

It should be between the upper ("F") and lower ("L") marks.

CHECK-UP OF COOLING WATER



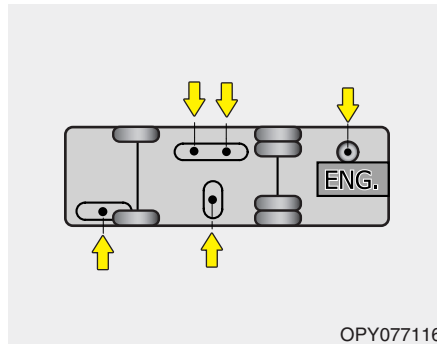
OPY077112

Check the coolant level before starting engine. Level gauge is seen inside to find coolant level. If the float is low, add the coolant until coolant is the "MAX" level of the surge tank.

CAUTION

- *Do not check and add coolant when the engine is hot. The coolant is under pressure when the engine is hot and can cause serious burns if radiator cap is removed or the drain cocks are opened.*
- *If the level is low, inspect for coolant leaks and recheck the fluid level frequently. If the level drops again, visit your service shop for an inspection and diagnosis of the reason.*

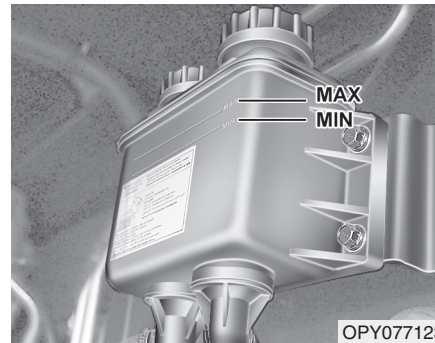
REMOVING WATER FROM AIR TANK



Three air tanks are located on the center of frame and each tank has a drain cock. Before driving, remove the water from air tank everyday.

Pull the cable connected in air tanks to remove the water.

CHECK-UP STEERING OIL



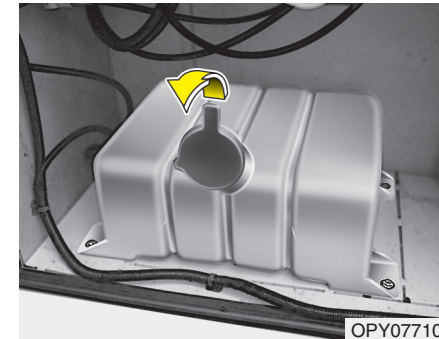
The oil level is normal when the level on reservoir is between MAX and MIN.



CAUTION

Do not use it together with other company brands.

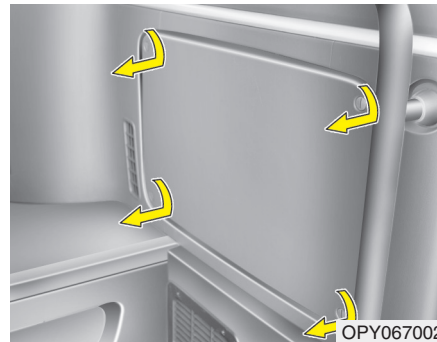
CHECK-UP-WINDSHIELD WASHER FLUID LEVEL



The washer fluid reservoir supplies fluid to the windshield washer system. A good quality washer fluid should be used to fill the washer reservoir. The fluid level should be checked more frequently during bad weather or whenever the washer system is in more frequent use.

- Radiator antifreeze (engine coolant) should not be used in the washer system because it will damage the vehicle finish.
- The washer button should not be pressed if the washer reservoir is empty. This can damage the washer fluid pump.
- Fill the washer fluid by pulling out the front washer reservoir.
- After refilling the washer fluid, replace the washer reservoir.

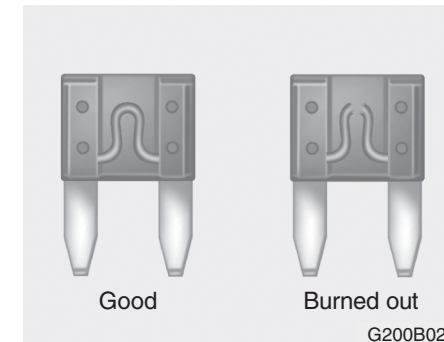
REPLACING FUSES



Replacing a fusible link

A fusible link will melt if the circuits from the battery are ever overloaded, thus preventing damage to the entire wiring harness. (This could be caused by a dead short in the system drawing too much current). If this ever happens, have a Hyundai dealer determine the cause, repair the system and replace the fusible link.

Fuse box is located in the instrument panel side the step of front door. Fuse box cover can be opened after rotating mounting screws a quarter of a turn counterclockwise.



CAUTION

When replacing a fusible link, never use anything but a new fusible link with the same or lower amperage rating. Never use a piece of wire or a higher-rated fusible link. This could result in serious damage and create a fire hazard.

Replacing accessory fuses

The fuse box for the lights and other electrical accessories will be found low on the dashboard on the driver's side. Inside the box you will find a list showing the circuits protected by each fuse.

If any of your vehicles lights or other electrical accessories stop working, a blown fuse could be the reason. If the fuse has burned out, you will see that the metal strip inside the fuse has burned through. If you suspect a blown fuse, follow this procedure:

1. Turn off the ignition and all other switches.
2. Open the fuse box and examine each fuse. Remove each fuse by pulling it toward you.
3. Be sure to check all other fuses even if you find one that appears to have burned out.
4. Replace the blown fuse by pressing a new fuse of the same rating into place. The fuse should be a snug fit. If it is not, have the fuse clip repaired or replaced by a Hyundai dealer.

If you do not have a spare fuse, you may be able to borrow a fuse of the same or lower rating from an accessory you can temporarily get along without. The radio or cigarette lighter, for example. Always remember to replace the borrowed fuse.



CAUTION

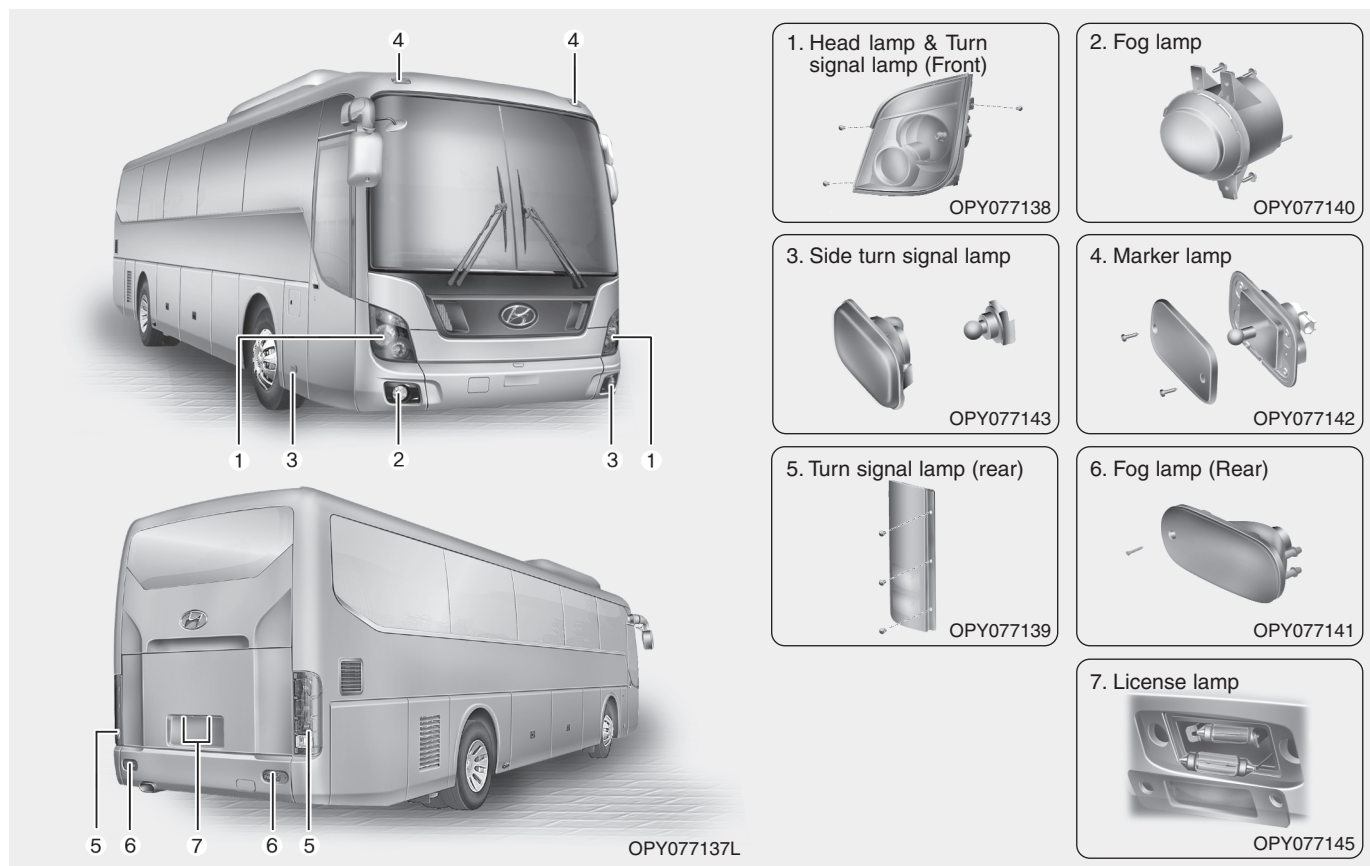
A burned-out fuse indicates that there is a problem in the electrical circuit. If you replace a fuse and it blows as soon as the accessory is turned on, the problem is serious and should be referred to a Hyundai dealer for diagnosis and repair. Never replace a fuse with anything except a fuse with the same or a lower amperage rating. A higher capacity fuse could cause damage and create a fire hazard.

REPLACEMENT OF LAMP

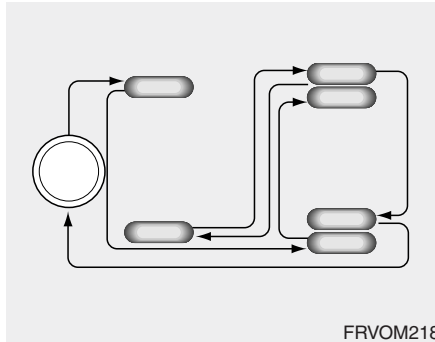
A lamp should always be replaced with a lamp of the specified voltage and wattage.

Place the starter switch to "LOCK" and set all switches to "OFF" before replacing a lamp.

Consumer information



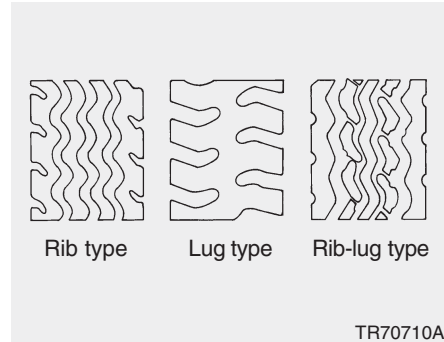
TIRE ROTATION



Since the amount of wear that a tire receives varies according to its location on the vehicle, the tires should be rotated in the following sequence every 8,000 km (5,000 miles) of operation to equalize wear and extend tire life.

1. Front wheels
2. Rear wheels
3. Spare tire

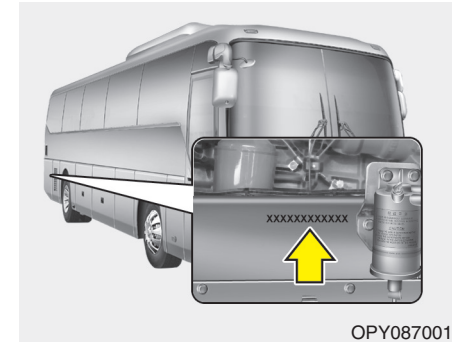
TIRE TYPE



The lug type pattern tires are not suited for high speed operation, as they tend to skid. If your vehicle is equipped with the lug type tires, care should be taken not to operate it at very high speed.

Exercise special care when controlling the steering wheel or applying brakes on a wet road surface.

CHASSIS NUMBER



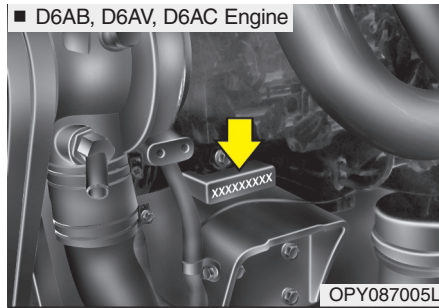
The chassis number is stamped as shown in the illustration.

Please use this number when ordering replacement parts.

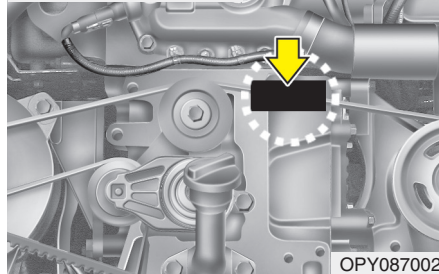
The chassis number is important in knowing the vehicle's history.

ENGINE NUMBER

■ D6AB, D6AV, D6AC Engine



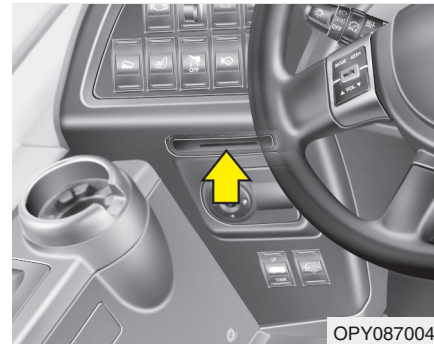
■ D6CA, D6CB Engine



The engine number is stamped as shown in the above illustration.

The engine number is an important number in determining the history of the engine.

VEHICLE IDENTIFICATION NUMBER (VIN) (IF EQUIPPED)



The vehicle identification number is the attached as shown in the illustration.

VEHICLE INFORMATION CODE PLATE



This plate is attached at the above of front right dashboard in the cab and shows the type of model, chassis number and engine number. Vehicle identification number (VIN) is the number used in registering your vehicle and in all legal matters pertaining to its ownership, etc.